

Lightweight and compact, the RoseCase RCS is the perfect solution for those who value flexibility. Its folding handle and ability to stand upright or on its side make this sturdy case highly practical. With custom inserts and printing options, the RCS ensures safe transport and a professional appearance – even when space is tight.



ROSECASE RCS

RCS 1240

INNER DIMENSIONS

W x H x D
105 x 220 x 35 mm

OUTER DIMENSIONS

W x H x D
113 x 249 x 40 mm

INNER DEPTH VOLUME

BASE	30 mm	0.8 Lt
COVER	5 mm	

WEIGHT PACKAGING UNIT

0.14 kg	84 pcs
---------	--------

MATERIAL

BASE	COVER	HINGE	CLOSURE
PP	PP	PP	PP

PRINT AREA

W x H
170 x 70 mm

LABEL AREA

W x H
97 x 212 mm

STOCK / STANDARD COLORS*

*mostly available from stock



ROSE CASE COLOR PALETTE*

*Available for minimum order quantities. Other special colors available on request.

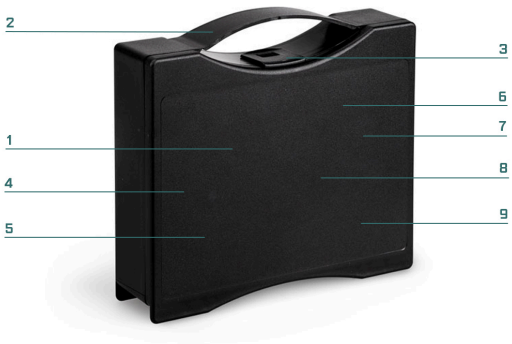


FOAM

CUSTOMIZED FOAM



FEATURES & FUNCTIONS



1. Lightweight yet extremely durable
2. Functional, space-saving folding handle
3. Simple and secure snap closure
4. Stands upright or on its side thanks to smart product design – ideal for practical storage
5. Showcase your products with transparent lids – the smooth, high-gloss surface is perfect for custom printing or labeling
7. Textured, scratch-resistant surface on colored case shells
8. Case shells available in custom color combinations
9. Foam inserts, tailored to your specifications
10. Also available in 100% recycled plastic